

2025/2026

# SWW

W E D D I N G   A N D   E V E N T S

# SWW

P L A N N I N G   |   S T Y L I N G   |   H I R E



[WWW.STEMSWITHLOVE.CO.UK](http://WWW.STEMSWITHLOVE.CO.UK)

# WELCOME

HI FIANCÉS...

THANKS FOR CHOOSING US!

WE ARE SO PLEASED YOU'RE CONSIDERING WORKING WITH US FOR YOUR SPECIAL DAY.  
WE'RE JUST AS EXCITED AS YOU TO START PLANNING!

SWL CAN ARRANGE YOUR WEDDING FLORALS, VENUE STYLING AND DÉCOR ALL UNDER ONE  
ROOF. SAVING YOU TIME AND STRESS,  
THIS ALLOWS YOU TO ENJOY THE RUN UP TO THE BIG DAY-HASSLE FREE.

WE SPECIALISE IN PREMIUM FRESH AND FAUX FLORALS, FROM ARRANGING YOUR BRIDAL  
FLOWERS AND BUTTONHOLES TO CREATING BESPOKE CENTREPIECES, WITH A SELECTION OF,  
PROPS AND CANDLES TO CHOOSE FROM.

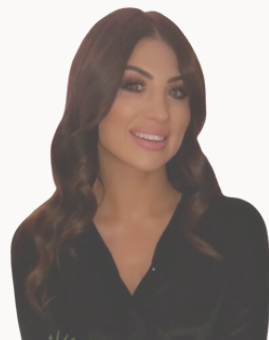
WE ALSO WORK WITH A SELECTION OF HAND PICKED SUPPLIERS TO ENSURE EVERY ASPECT  
OF YOUR DAY IS LOOKED AFTER BY AN AREA EXPERT.

WE UNDERSTAND THAT EVERY COUPLE WILL HAVE DIFFERENT VISIONS AND IDEAS ABOUT THE  
LOOK THEY WANT TO ACHIEVE. THIS IS WHY ALL OF OUR HIRE ITEMS CAN BE CUSTOMISED TO  
MATCH YOUR STYLE, COLOURS AND THEME- TO MAKE THAT VISION A REALITY.  
WE CAN ALSO CREATE BESPOKE DESIGNS INSPIRED BY YOU.

WE ARE PROFESSIONALS WITH A KEEN EYE FOR DETAIL, SO IF YOU WANT A MEMORABLE  
WEDDING THAT IS STYLISH AND ELEGANT, YOU'RE IN THE RIGHT PLACE

WE LOOK FORWARD TO STYLING AND  
PLANNING WITH YOU!

ABBY  
XXX



## **BESPOKE VENUE STYLING**

FOR WEDDING CENTREPIECES OR VENUE DRESSING WHICH IS TAILORED TO YOUR VISION,  
WE OFFER INDIVIDUAL STYLING WITH A PERSONALISED QUOTE.  
PLEASE SPEAK TO US TO ARRANGE YOUR FREE INITIAL CONSULTATION CALL.

WE CAN BE AS MINIMALISTIC OR BOLD AS YOU WISH WITH OUR FRESH FLOWER COLLECTION.  
OPTIONS ARE ALL FULLY BESPOKE TO YOUR OWN IDEAS AND VISION  
AND OUR CREATIVITY IS LIMITLESS.

AS THIS IS PERSONALISED SERVICE ALL PRICES ARE QUOTED WITHIN 48 HOURS  
FOLLOWING A CONSULTATION.

FRESH FLOWER ARRANGEMENTS CAN BE ANYTHING FROM A FEW BUD VASES  
TO A FULL FLORAL ARCH.

TO ARRANGE YOUR INITIAL CONSULTATION WITH US PLEASE SEND  
A WHATSAP TO 07754 182046.

INCLUDE, YOUR NAME, WEDDING DATE, WEDDING VENUE, BUDGET  
AND YOUR TOP 3 INSPO PICTURES



## WEDDING VENUE PACKAGES 2025-2026

FOR OUR MOST POPULAR WEDDING STYLES WE OFFER SET PACKAGES WHICH INCLUDES YOUR AISLE DRESSING, SIGNING TABLE, GUEST TABLES AND TOP TABLE. WE GIVE UPFRONT PRICING FOR A STANDARD PACKAGE, WITH THE OPTION TO ADD ON ADDITIONAL ITEMS.

AVAILABLE FOR WHEN YOUR CEREMONY AND RECEPTION ARE IN THE SAME VENUE.

A DELIVERY AND COLLECTION FEE WILL BE ADDED SEPARATELY AND WILL VARY DUE TO THE DISTANCE AND LOCATION OF THE VENUE.

PLEASE CONTACT US IF YOU ONLY REQUIRE A RECEPTION PACKAGE- FOR EXAMPLE IF YOU'RE GETTING MARRIED IN A CHURCH AND WOULD ONLY LIKE THE WEDDING BREAKFAST AT THE VENUE TO BE DRESSED.

AT STEMS WITH LOVE CUSTOMER SERVICE IS PARAMOUNT TO US. FOR THIS REASON WE WILL ONLY EVER TAKE 1 BOOKING PER DAY FOR OUR VENUE PACKAGES AND STYLING SERVICES.

WE REQUIRE ALL BOOKINGS TO BE SECURED WITH A NON REFUNDABLE DEPOSIT OF 20%



## **RUSTIC PACKAGE 1**

\*6 SETS OF 3 VASES AND LED CANDLES, TO BE USED ALONG YOUR AISLE.

\*FRESH FOLIAGE/AND/OR FRESH WHITE GYPSOPHILA WEAVED THROUGH YOUR AISLE CANDLES.

\*FRESH GARLAND OF FOLIAGE AND/OR GYPSOPHILA ARRANGED ACROSS YOUR SIGNING TABLE

\*STAFF REMAINING ON SITE TO CHANGE THE ROOM AND ITEMS FROM YOUR CEREMONY TO RECEPTION,  
THIS INCLUDES ANY ADD ON ITEMS.

\*FRESH GARLAND OF FOLIAGE AND/OR GYPSOPHILA MOVED FROM YOUR SIGNING TABLE AND  
REARRANGED ALONG YOUR TOP TABLE.

(MAXIMUM 8 FOOT, WHICH IS APPROXIMATELY 6 PEOPLE.

(LARGER GARLANDS WILL BE CHARGED AT £30 PER ADDITIONAL FOOT)

\*GUEST TABLES STYLED WITH MIXED SIZED LOGS, 3 MIXED SIZED VASES WITH LED PILLAR CANDLES.  
LOGS DRESSED WITH FRESH FOLIAGE AND/OR GYPSOPHILA.  
UPGRADE TO FLOATING CANDLES FOR £10 PER TABLE.

\* ADDITIONAL TEA LIGHTS AND HOLDERS ON EACH TABLE  
MAXIMUM 8 TABLES

**PRICE £800**



## **BLOSSOM TREE PACKAGE 2**

\*WHITE TABLE RUNNER WITH PREMIUM QUALITY FAUX SILK FLORALS AND GREENERY, USED ON YOUR SIGNING TABLE (THEN TRANSFERRED TO YOUR TOP TABLE)

\*6 ACRYLIC STANDS, FOR BLOSSOM TREES TO BE USED ALONG YOUR AISLE.

\*FAUX SILK PETALS ALONG YOUR AISLE

\*STAFF REMAINING ON SITE TO CHANGE THE ROOM AND ITEMS FROM YOUR CEREMONY TO RECEPTION, THIS INCLUDES ANY ADD ON ITEMS.

\*GUEST TABLES DRESSED WITH 4.5 FOOT PREMIUM BLOSSOM TREE, WITH A FLORAL WREATH AT THE BASE.

\*HANGING GLASS BAUBLES WITH TEALIGHTS, 5 PER TREE.

MAXIMUM 8 TABLES.

**PRICE £1000**



### **FAUX FLOWER PACKAGE 3**

\*6 ACRYLIC OR GOLD STANDS, LARGE, ELEGANT WHITE AND GREEN, FAUX FLOWER ARRANGEMENTS TO BE USED ALONG YOUR AISLE.

\*FAUX SILK PETALS ALONG YOUR AISLE

\*SIGNING TABLE DRESSED WITH A WHITE FLORAL RUNNER, INCLUDING HIGH QUALITY ARTIFICIAL FLORALS AND FOLIAGE.

\*STAFF REMAINING ON SITE TO CHANGE THE ROOM AND ITEMS FROM YOUR CEREMONY TO RECEPTION, THIS INCLUDES ANY ADD ON ITEMS.

\*TABLE RUNNER MOVED FROM YOUR SIGNING TABLE TO TOP TABLE. MAXIMUM SIZE OF 12 FOOT. ADDITION OF CANDLES AND PETALS.

\*GUEST TABLES DRESSED WITH A LARGE ARTIFICIAL FLORAL ARRANGEMENT IN WHITE WITH FOLIAGE, ON A STAND OF YOUR CHOICE. COMPLIMENTED WITH WHITE TAPERED CANDLES AND GLASS COVERS. (ACCENT COLOUR CANDLES CAN BE ASSED AT ADDITIONAL COST) MAXIMUM 8 TABLES.

**PRICE : £1000**



## **CANDELABRA PACKAGE 4**

\*6 ACRYLIC STANDS TO BE USED ALONG YOUR AISLE.

\*8 ARM GHOST CANDELABRAS TO BE USED ALONG YOUR AISLE

\*FAUX SILK PETALS ALONG YOUR AISLE

\*SIGNING TABLE DRESSED WITH A WHITE FLORAL RUNNER, INCLUDING HIGH QUALITY ARTIFICIAL FLORALS AND FOLIAGE OR FRESH FOLIAGE AND/OR GYPSOPHILA GARLAND (THEN TRANSFERRED TO YOUR TOP TABLE)

\*STAFF REMAINING ON SITE TO CHANGE THE ROOM AND ITEMS FROM YOUR CEREMONY TO RECEPTION, THIS INCLUDES ANY ADD ON ITEMS.

\*ADDITION OF CANDLES TO YOUR TOP TABLE

\*GUEST TABLES DRESSED WITH TALL, CLEAR, 8 ARM CANDELABRAS WITH AN ARTIFICIAL WREATH OR ARRANGEMENT AT THE BASE OR DRESSED WITH A GARLAND OR BASE OF FOLIAGE AND/OR FRESH GYPSOPHILA. COMPLIMENTED WITH ADDITIONAL CANDLES AND TEA LIGHTS ON EACH TABLE. MAXIMUM 8 TABLES.

**PRICE : £1100**





## **GYPHOPHILA PACKAGE 6**

FULL AND FRESH GYPHOPHILA GARLAND FOR YOUR SIGNING TABLE (THEN TRANSFERRED TO YOUR TOP TABLE)

\*FAUX SILK PETALS ALONG YOUR AISLE

\*6 ACRYLIC STANDS TO BE USED ALONG YOUR AISLE.

SETS OF 3 VASES AND CANDLES, TO BE USED ALONG YOUR AISLE ALONG WITH GYPHOPHILA CENTREPIECES.  
(THEN TRANSFERRED TO GUEST TABLES)

STAFF REMAINING ON SITE TO CHANGE THE ROOM AND ITEMS FROM YOUR CEREMONY TO RECEPTION, THIS  
INCLUDES ANY ADD ON ITEMS.

\*TOP TABLE DRESSED WITH FULL FRESH GYPHOPHILA GARLAND.  
MAXIMUM 10 FOOT WHICH IS APPROXIMATELY 6 PEOPLE AND ALLOWING THE ARRANGEMENT TO DRAPE DOWN  
ONE SIDE. (LONGER TOP TABLES ARE CHARGED AT £60 PER ADDITIONAL FOOT)  
SWEETHEART TOP TABLES HAVE THE OPTION OF A HANGING GYPHOPHILA CLOUD

\*ADDITIONAL VASES AND CANDLES TO BE PLACED AT THE BASE OF THE CASCADING GARLAND.

\*GUEST TABLES DRESSED WITH A SMALL FRESH GYPHOPHILA ARRANGEMENT OR WREATH.

\*CANDLES AND TEA LIGHTS ADDED TO EACH TABLE.  
MAXIMUM 8 TABLES.

**PRICE: £2000**



# Add on items

## PERSONALISED WELCOME SIGNS

\*STANDARD WELCOME SIGN ON RUSTIC WOOD, WHITE, GOLD, BLACK EASEL: £60

\*DELUXE WELCOME SIGN ON RUSTIC WOOD, WHITE, GOLD, BLACK EASEL, WITH FOLIAGE AND OPTIONAL FRESH GYPSOPHILA AND OR REAL TOUCH ROSES: £100

\*GOLD OR BLACK, FREESTANDING, MIRRORED WELCOME SIGN, WITH FLORAL ARRANGEMENT AND CANDLES: £200

## BACKDROPS

\*RUSTIC BACKDROP, WOODEN ARCH DRAPED WITH MATERIAL AND 2 FOLIAGE ARRANGEMENTS (OPTIONAL ADDED FRESH GYPSOPHILA AND/OR REAL TOUCH ROSES) PLUS HANGING GLASS BAUBLES AND TEA LIGHTS: £200

\*FLORAL ARCH WITH WHITE ARTIFICIAL FLORALS AND GREEN FOLIAGE: £250

\*LARGE MOONGATE DRESSED WITH FOLIAGE AND/OR GYPSOPHILA £150

\*TABLE CANOPY WITH ARTIFICIAL WHITE FLORALS AND FOLIAGE: £150

## COLOUR ACCENTS

\*TABLE RUNNER IN COLOUR OF YOUR CHOICE £10 PER GUEST TABLE.

\*COLOURED CANDLES FROM £2 PER CANDLE (PRICE ON REQUEST)

## FINISHING TOUCHES

\*NEON SIGN FROM OUR COLLECTION £40

\*PERSONALISED NEON FROM £200

\*SMALL BUD VASES WITH CHOICE OF FAUX SILK ROSES, FOLIAGE AND FRESH GYPSOPHILA- £10 PER SET OF 3 VASES

\*AISLE MEADOWS-RECOMMENDED IN MULTIPLES OF 2 ARRANGEMENTS FOR EITHER SIDE OF YOUR AISLE.

ARTIFICIAL FOLIAGE AND ROSES ARRANGEMENT £25

FRESH GYPSOPHILA ARRANGEMENT £50

\*ADDITIONAL CANDLE SETS- 3 VASES PER SET

LED CANDLES £15

FLOATING CANDLES £25



## WEDDING FLOWERS

\* MIXED BOUQUET, INCLUDES ROSES, FOLIAGE AND A FILLER FLOWER



LOOSE AND FLOWING HAND TIED

BRIDE: FROM £100

BRIDESMAID: FROM £80

ARTIFICIAL: FROM £65

TEARDROP BOUQUET

BRIDE: FROM £120

BRIDESMAID: FROM £100

ARTIFICIAL: FROM £75

\* ROSES ONLY IN ROUND COMPACT DOME

OPTIONAL EDGE OF GYPSOPHILA

BRIDE: FROM 120+

BRIDESMAID: FROM £100

ARTIFICIAL: FROM £55



GYPSOPHILA BOUQUETS:

SMALL: £45

MEDIUM: £60

LARGE: £80



\*LONG STEM TIED ROSES

BRIDE: FROM £75

BRIDESMAID: FROM £55

\*DRIED ARRANGEMENT

BRIDE: FROM £75

BRIDESMAID: FROM £55



\*BUTTONHOLE, DOUBLE ROSE AND FOLIAGE: £20

ARTIFICIAL: £15

\*BUTTONHOLE, SINGLE ROSE AND FOLIAGE: £15

ARTIFICIAL: £10

\*BUTTONHOLE, SINGLE ROSE: £10

ARTIFICIAL: £8

\*GYPSOPHILA BUTTONHOLE £8

\*CHILDS WAND: FROM £35

\*CORSAGE

DRESS: FROM £25

WRIST: FROM £35

## **BOOKING AND TIMELINE**

CONTACTING US:  
PLEASE FILL IN OUR ENQUIRY FORM ON OUR WEBSITE  
WWW.STEMSWITHLOVE.CO.UK  
THIS IS UNDER THE "WEDDING TAB" CLICK ENQUIRE ONLINE

ONCE AN ENQUIRY IS MADE, WE WILL CONTACT YOU TO LET YOU KNOW IF THE DATE IS AVAILABLE AND TO ARRANGE YOUR INITIAL TELEPHONE CONSULTATION.  
WE WILL SEND YOU A WHATSAPP ASKING FOR BASIC INFORMATION AND REQUEST ANY PHOTOS/IDEAS THAT YOU HAVE.

### 1: INITIAL CONSULTATION BY TELEPHONE

THE CALL TAKES APPROXIMATELY 30 MINUTES AND ALLOWS US TO GET THE BASIC INFORMATION IN ORDER TO GIVE YOU A PERSONALISED QUOTE.  
A WRITTEN QUOTE WILL BE ISSUED TO YOU USUALLY WITHIN 48 HOURS.

### 2: SECURING YOUR DATE

IF YOU ARE HAPPY WITH YOUR QUOTE, WE ASK FOR A DEPOSIT OF 20% OF THE BALANCE TOTAL.  
THIS DEPOSIT IS NON REFUNDABLE, ALTHOUGH IT IS TRANSFERABLE TO ANOTHER AVAILABLE DATE.

### 3: FULL CONSULTATION

FOUR MONTHS PRIOR TO YOUR WEDDING  
WE WILL INVITE YOU INTO STORE AND GO OVER THE INITIAL QUOTE IN MORE DETAIL.  
AT THIS POINT YOU MAY WANT TO MAKE SOME ALTERATIONS AND ADDITIONS. THIS IS TOTALLY NORMAL AND WE DON'T EXPECT EVERYTHING TO BE EXACTLY AS YOUR INITIAL QUOTE.

### 4: FINAL CONSULTATION

SIX WEEKS PRIOR TO YOUR WEDDING WE WILL HAVE A FINAL CONSULTATION IN STORE OR BY PHONE.  
THIS IS TO CROSS THE T'S AND DOT THE I'S AND GET ANY FINAL INFORMATION YOU MAY NOT HAVE HAD AT YOUR LAST APPOINTMENT.  
WE WILL SEND YOU A SUMMARY OF THIS MEETING IN WRITING AND REQUEST YOUR FINAL BALANCE  
YOUR FINAL BALANCE IS DUE NO LATER THAT A MONTH PRIOR TO YOUR WEDDING.  
THIS ALLOWS US TO PREORDER ANY STOCK TO ENSURE WE HAVE ALL OF THE FLOWERS AND ITEMS NEEDED FOR YOUR WEDDING DAY IN ADVANCE.

### 5: THE WEEK OF YOUR WEDDING

WE WILL CALL YOU FOR A FINAL RUN DOWN OF YOUR ORDER AND EXPLAIN OUR TIME FRAMES FOR THE DAY.

### THE DAY OF YOUR WEDDING

WE WILL BE ON HAND EXCLUSIVELY FOR YOU AS WE ONLY BOOK ONE WEDDING PER DAY.  
WEDDING FLOWERS USUALLY ARRIVE TO YOUR CHOSEN ADDRESS, 2 HOURS PRIOR TO YOUR WEDDING.  
FOR VENUE STYLING, OUR ARRIVAL TIMES WILL BE DISCUSSED WITH THE VENUE WEDDING CO-ORDINATOR



**@SWL\_EVENTS**

**@STEMSWITHLOVE**



**@STEMSWITHLOVE**



**07754 182046**

